

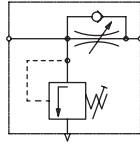
**PRODUCT OVERVIEW**



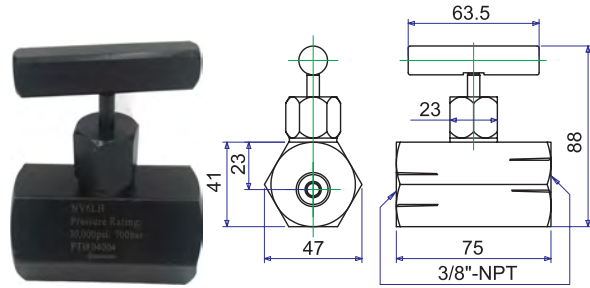
<b>PRODUCT</b>	<b>MODEL</b>	<b>PRESSURE RATING (BAR)</b>	<b>PAGE NUMBER</b>
<b>Load Holding Valves</b>	NV6LH/ LHV6/ PCV6/ CV6	700	36
<b>Shut Off Valves</b>	NV6/ NV6F	700	37
<b>Pressure Relief Valves</b>	PRV1C/ PRV2C	700	37
<b>Manifolds</b>	MB6/ MB7/ NVB2/ NVB4	700	38-39
<b>700 Bar Fittings</b>	FA, FB, FC, FD, FE, FF, FD, FH, FM, FP series	700	40
<b>700 Bar Couplings and Caps</b>	FMV, MC, MCM, CS6, FFC, DC series	700	41
<b>Poly Hoses</b>	97 series	700	42
<b>Pressure Gauges</b>	G634B/ G1004B	700	42
<b>Hydraulic Oil</b>	B01L46/ B04L46	-	42

**LOAD HOLDING VALVES**

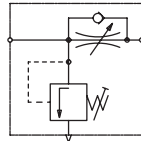
**MODEL: NV6LH**



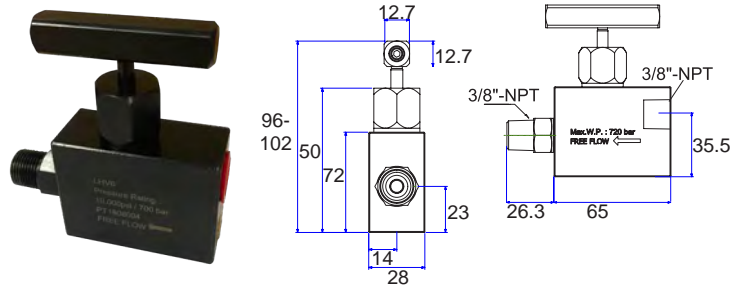
- Needle valve style load holding
- Bypass flow control in return direction
- Built in pressure relief valve (vent to atmosphere)
- Maximum working pressure : 10,000 psi / 700 Bar



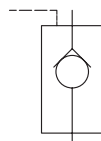
**MODEL: LHV6**



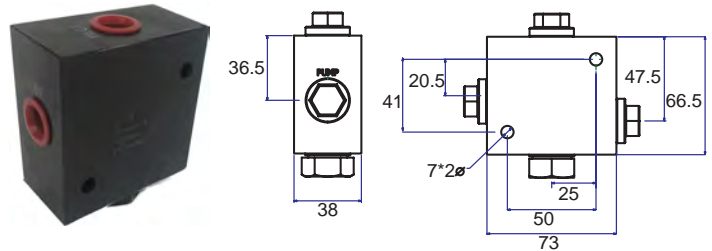
- Load holding valve
- Bypass flow control in return direction
- Built in pressure relief valve (vent to atmosphere)
- Maximum working pressure : 10,000 psi / 700 Bar



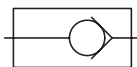
**MODEL: PCV6**



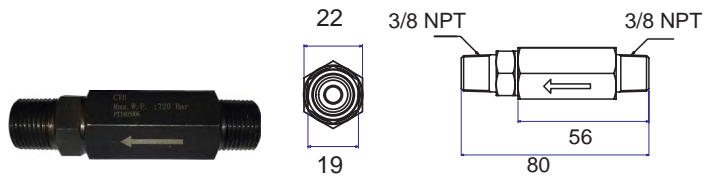
- Inline pilot operated check valve
- 3/8 NPT female threads
- Maximum working pressure : 10,000 psi / 700 Bar



**MODEL: CV6**



- Inline check valve
- 3/8 NPT male threads
- Maximum working pressure : 10,000 psi / 700 Bar



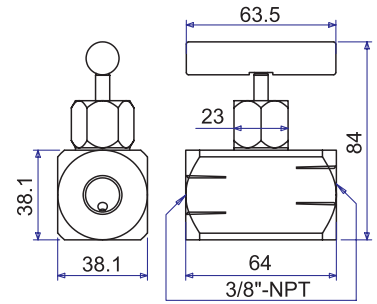
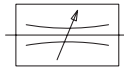
**SPECIFICATIONS**

Model	Thread (NPT)	Weight (kg)
NV6LH	3/8"	1.0
LHV6	3/8"	0.9
PCV6	3/8"	1.6
CV6	3/8"	0.3

**SHUT OFF VALVES**

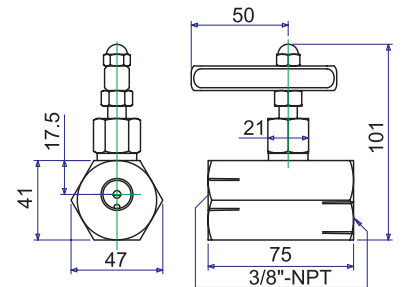
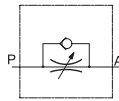
**MODEL: NV6**

- Used for normal flow control
- Can be used as a shut off valve
- Maximum working pressure : 10,000 psi / 700 Bar
- 1/4 NPT needle valve available on request (NV4)



**MODEL: NV6F**

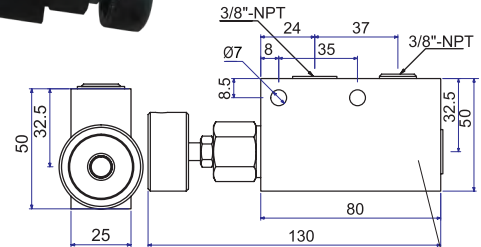
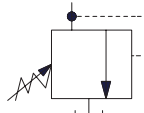
- Used for precise metering of flow
- Bypass flow control in return direction
- Temporary shut off only
- Maximum working pressure : 10,000 psi / 700 Bar



**PRESSURE RELIEF VALVES**

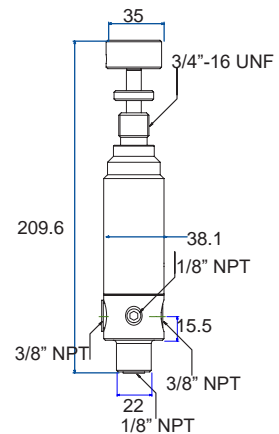
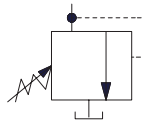
**MODEL: PRV1C**

- Inline pressure relief valve
- Adjustable from 7 - 700 bar
- Built in pressure relief valve
- Maximum working pressure : 10,000 psi / 700 Bar



**MODEL: PRV2C**

- Inline pressure regulator valve
- Adjustable from 7 - 700 bar
- Built in pressure relief valve
- Maximum working pressure : 10,000 psi / 700 Bar



**SPECIFICATIONS**

**SHUT OFF VALVES**

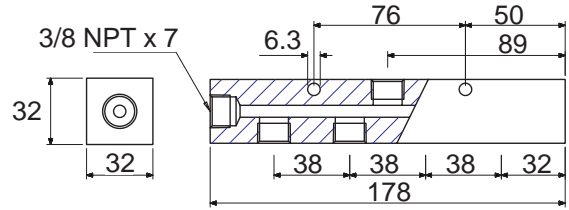
Model	Weight (kg)
NV6	0.8
NV6F	0.8

**PRESSURE RELIEF VALVES**

Model	Weight (kg)
PRV1C	0.8
PRV2C	0.8

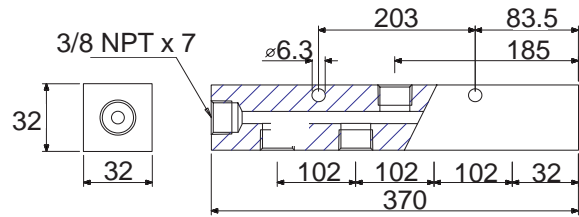
**MODEL: MB7-S**

- 7 x 3/8 NPT manifold block
- Ideal as return manifold or when gauges are not required
- Maximum working pressure : 10,000 psi / 700 Bar



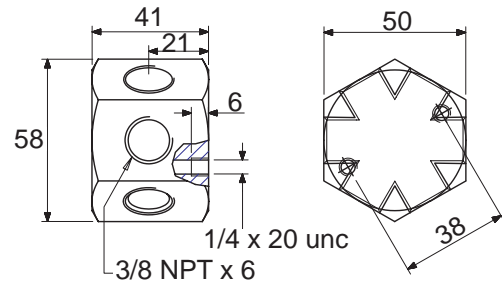
**MODEL: MB7-L**

- 7 x 3/8 NPT manifold block
- Larger gap between ports ideal for use with gauges
- Maximum working pressure : 10,000 psi / 700 Bar



**MODEL: MB6H**

- 6 x 3/8 NPT manifold block
- Hex design to allow for multiple angle connection
- Maximum working pressure : 10,000 psi / 700 Bar

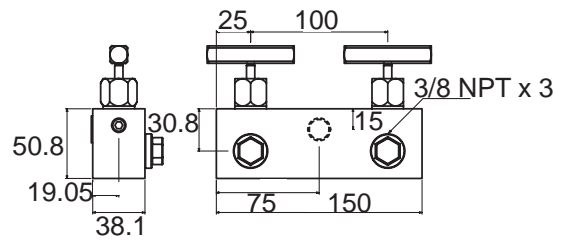


**SPECIFICATIONS**

Model	NPT Ports		Weight (kg)
	QTY	Thread (NPT)	
MB7-S	7	3/8"	1.2
MB7-L	7	3/8"	1.5
MB6H	6	3/8"	0.8

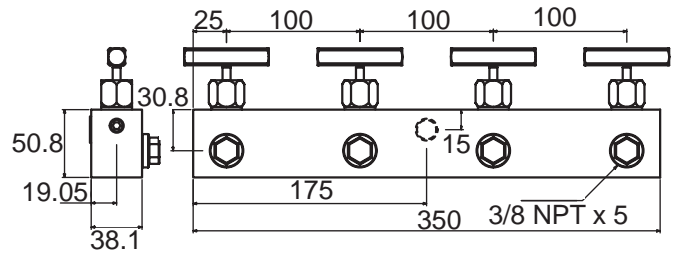
**MODEL: NVB2**

- 3 x 3/8 NPT ports
- Built in needle valves for 2 outlet load control
- Maximum working pressure : 10,000 psi / 700 Bar



**MODEL: NVB4**

- 5 x 3/8 NPT manifold block
- Built in needle valves for 4 outlet load control
- Maximum working pressure : 10,000 psi / 700 Bar

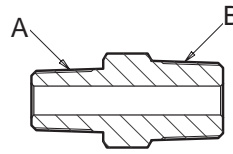


**SPECIFICATIONS**

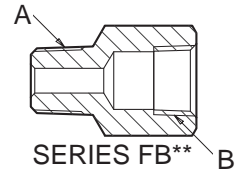
Model	NPT Ports		Weight (kg)
	QTY	Thread (NPT)	
NVB2	3	3/8"	1.7
NVB4	5	3/8"	2.2

**STRAIGHT CONNECTORS**

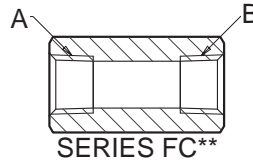
Model	(A)		(B)	
	Thread (NPT)	Type	Thread (NPT)	Type
FA66	3/8"	Male	3/8"	Male
FA44	1/4"	Male	1/4"	Male
FA46	1/4"	Male	3/8"	Male
FB46	1/4"	Male	3/8"	Female
FB64	3/8"	Male	1/4"	Female
FC66	3/8"	Female	3/8"	Female
FC44	1/4"	Female	1/4"	Female
FC46	1/4"	Female	3/8"	Female
FM66	3/8"	Male	3/8"	Female Swivel



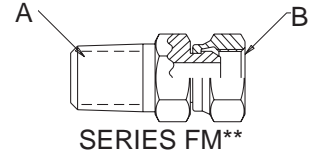
SERIES FA\*\*



SERIES FB\*\*



SERIES FC\*\*

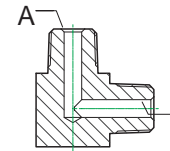


SERIES FM\*\*

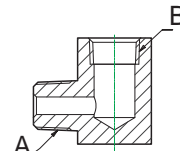


**ELBOW AND TEE CONNECTORS**

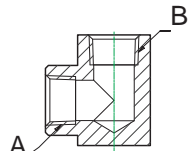
Model	(A)		(B)		(C)	
	Thread (NPT)	Type	Thread (NPT)	Type	Thread (NPT)	Type
FD66	3/8"	Male	3/8"	Male	-	-
FE66	3/8"	Male	3/8"	Female	-	-
FF66	3/8"	Female	3/8"	Female	-	-
FG666	3/8"	Male	3/8"	Female	3/8"	Female
FH444	1/4"	Female	1/4"	Female	1/4"	Female
FH666	3/8"	Female	3/8"	Female	3/8"	Female



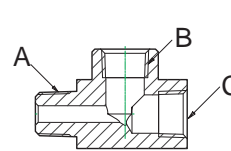
SERIES FD\*\*



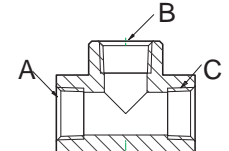
SERIES FE\*\*



SERIES FF\*\*



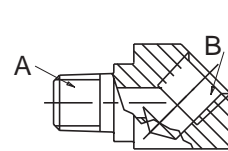
SERIES FG\*\*



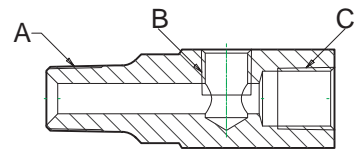
SERIES FH\*\*

**GAUGE CONNECTORS**

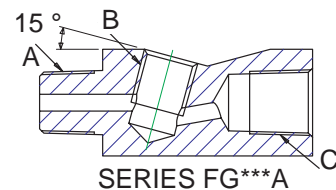
Model	(A)		(B)		(C)	
	Thread (NPT)	Type	Thread (NPT)	Type	Thread (NPT)	Type
FP44	1/4"	Male	1/4"	Female	-	-
FG646	3/8"	Male	1/4"	Female	3/8"	Female
FG646A	3/8"	Male	1/4"	Female	3/8"	Female



SERIES FP\*\*



SERIES FG\*\*



SERIES FG\*\*A

## HIGH FLOW COUPLINGS

- Ball style
- Compatible with pin style couplings
- Coupling set comes with rubber dust caps
- Max flow : 35 lpm
- Max working pressure : 700 bar (10,000 psi)

Model	Thread (NPT)	Thread type	Female half	Male half
FMC6	3/8"	Male	✓	-
MC6	3/8"	Female	-	✓
CS6	3/8"	Male & Female	✓	✓
FMC4	1/4"	Male	✓	-
MC4	1/4"	Female	-	✓
MC4M	1/4"	Male	-	✓



Models: FMC6 / FMC4



Models: MC6 / MC4



Model: MC4M



Model: CS6

## FLUSH FACE COUPLINGS

- Zero leakage
- Push to connect positive locking
- Max flow : 40 lpm
- Max working pressure : 700 bar (10,000 psi)

Model	Thread (NPT)	Thread type	Female half	Male half
FFC6M	3/8"	Female	-	✓
FFC6F	3/8"	Male	✓	-



Model: FFC6M



Model: FFC6F

## DUST CAPS

Model	Thread (NPT)	Material	Suits Coupler	
			Female half	Male half
DCS6M	3/8"	Aluminium	-	✓
DCS6F	3/8"	Aluminium	✓	-
DCR6	3/8"	Rubber	✓	✓
DCS4M	1/4"	Aluminium	-	✓
DCS4F	1/4"	Aluminium	✓	-



Models: DCS6F / DCS4F



Models: DCS6M / DCS4M



Model: DCR6

## HOSE FEATURES

- 4:1 safety factor
- Rubber guards on all models for crimp and bend protection
- Rubber dust caps supplied with all male couplings
- Maximum working pressure : 10,000 psi / 700 Bar

## HOSE MODEL CODES

Model	Hose length (m)	Hose ID	Hose end one	Hose end two
9765-P	0.6	6.4mm (1/4")	3/8" Npt	3/8" Npt
9755-P	0.9	6.4mm (1/4")	3/8" Npt	3/8" Npt
9756-P	1.8	6.4mm (1/4")	3/8" Npt	3/8" Npt
9757-P	2.4	6.4mm (1/4")	3/8" Npt	3/8" Npt
9758-P	3.1	6.4mm (1/4")	3/8" Npt	3/8" Npt
9759-P	3.7	6.4mm (1/4")	3/8" Npt	3/8" Npt
9760-P	6.1	6.4mm (1/4")	3/8" Npt	3/8" Npt
9761-P	9.1	6.4mm (1/4")	3/8" Npt	3/8" Npt
9762-P	15.3	6.4mm (1/4")	3/8" Npt	3/8" Npt
9750-P	22.9	6.4mm (1/4")	3/8" Npt	3/8" Npt
9751-P	30.5	6.4mm (1/4")	3/8" Npt	3/8" Npt
9765-PC	0.6	6.4mm (1/4")	3/8" Npt	MC6
9755-PC	0.9	6.4mm (1/4")	3/8" Npt	MC6
9756-PC	1.8	6.4mm (1/4")	3/8" Npt	MC6
9757-PC	2.4	6.4mm (1/4")	3/8" Npt	MC6
9758-PC	3.1	6.4mm (1/4")	3/8" Npt	MC6
9759-PC	3.7	6.4mm (1/4")	3/8" Npt	MC6
9760-PC	6.1	6.4mm (1/4")	3/8" Npt	MC6
9761-PC	9.1	6.4mm (1/4")	3/8" Npt	MC6
9762-PC	15.3	6.4mm (1/4")	3/8" Npt	MC6
9750-PC	22.9	6.4mm (1/4")	3/8" Npt	MC6
9751-PC	30.5	6.4mm (1/4")	3/8" Npt	MC6
9765-PC2	0.6	6.4mm (1/4")	MC6	MC6
9755-PC2	0.9	6.4mm (1/4")	MC6	MC6
9756-PC2	1.8	6.4mm (1/4")	MC6	MC6
9757-PC2	2.4	6.4mm (1/4")	MC6	MC6
9758-PC2	3.1	6.4mm (1/4")	MC6	MC6
9759-PC2	3.7	6.4mm (1/4")	MC6	MC6
9760-PC2	6.1	6.4mm (1/4")	MC6	MC6
9761-PC2	9.1	6.4mm (1/4")	MC6	MC6
9762-PC2	15.3	6.4mm (1/4")	MC6	MC6
9750-PC2	22.9	6.4mm (1/4")	MC6	MC6
9751-PC2	30.5	6.4mm (1/4")	MC6	MC6



## TWIN LINE WRENCH HOSE

Model	Description
TWH20-VIC	6M Twin line hose complete with 1/4" couplings
TWH20-VIC-S	6M Twin line hose complete with 1/4" couplings fitted with burst sleeve

## HOSE ASSEMBLY OPTIONS

Suffix Code	Description
S	Supplied with burst protection sleeve
T	Supplied with test certificate
MDG41	Full MDG41 compliant hose assembly

**Custom lengths are available on request**

## PRESSURE GAUGES - 1000 BAR

Boss hydraulic pressure gauges are dual scale displaying in both Bar and PSI. The gauges "red line" between 700 Bar/ 10,000 PSI up to 1000 Bar/ 14,500 PSI to protect the gauge from pressure spikes.



The Boss 100mm gauge is fully adjustable. It can be calibrated and supplied with NATA certification.

Part No.	Description	Accuracy	Size (mm)
G634B	Liquid filled 1/4 NPT bottom entry	+/- 1.6%	63
G1004B	Liquid filled 1/4 NPT bottom entry	+/- 1%	100

## HYDRAULIC OIL

Boss hydraulic oil gives you the reassurance your hydraulic equipment will work at a premium level. Boss hydraulic oil is an ISO46 grade oil.



Part No.	Description	Size (lt)
B01L46	Hydraulic Oil - ISO46	1
B04L46	Hydraulic Oil - ISO46	4